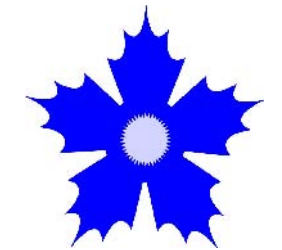
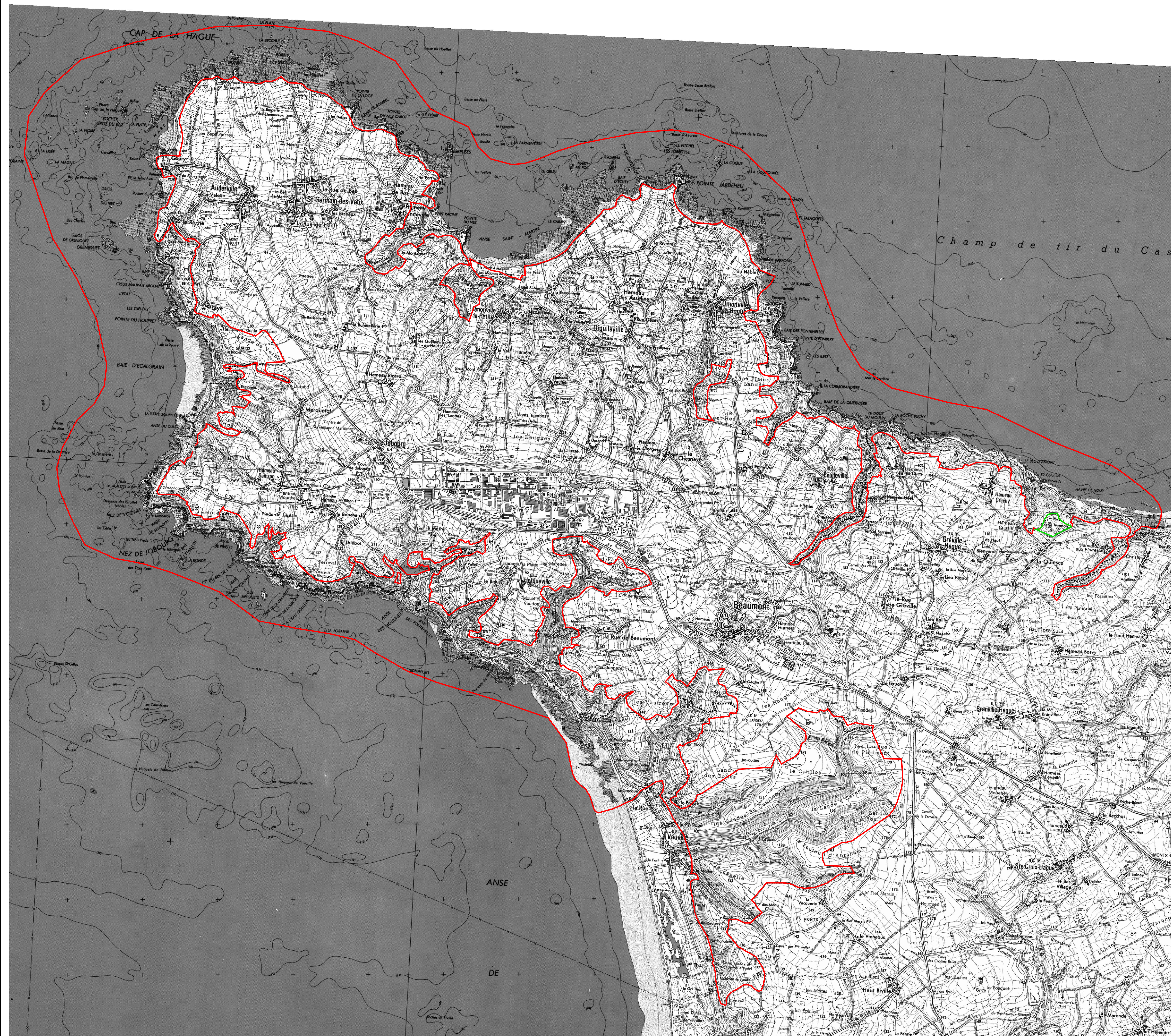




LE PERIMETRE DU SITE NATURA 2000



Conservatoire de l'espace littoral
et des rivages lacustres



-  Périmètre NATURA 2000
-  Zone en cours de classement NATURA 2000

 Limite communale

0 1000 2000 Mètres

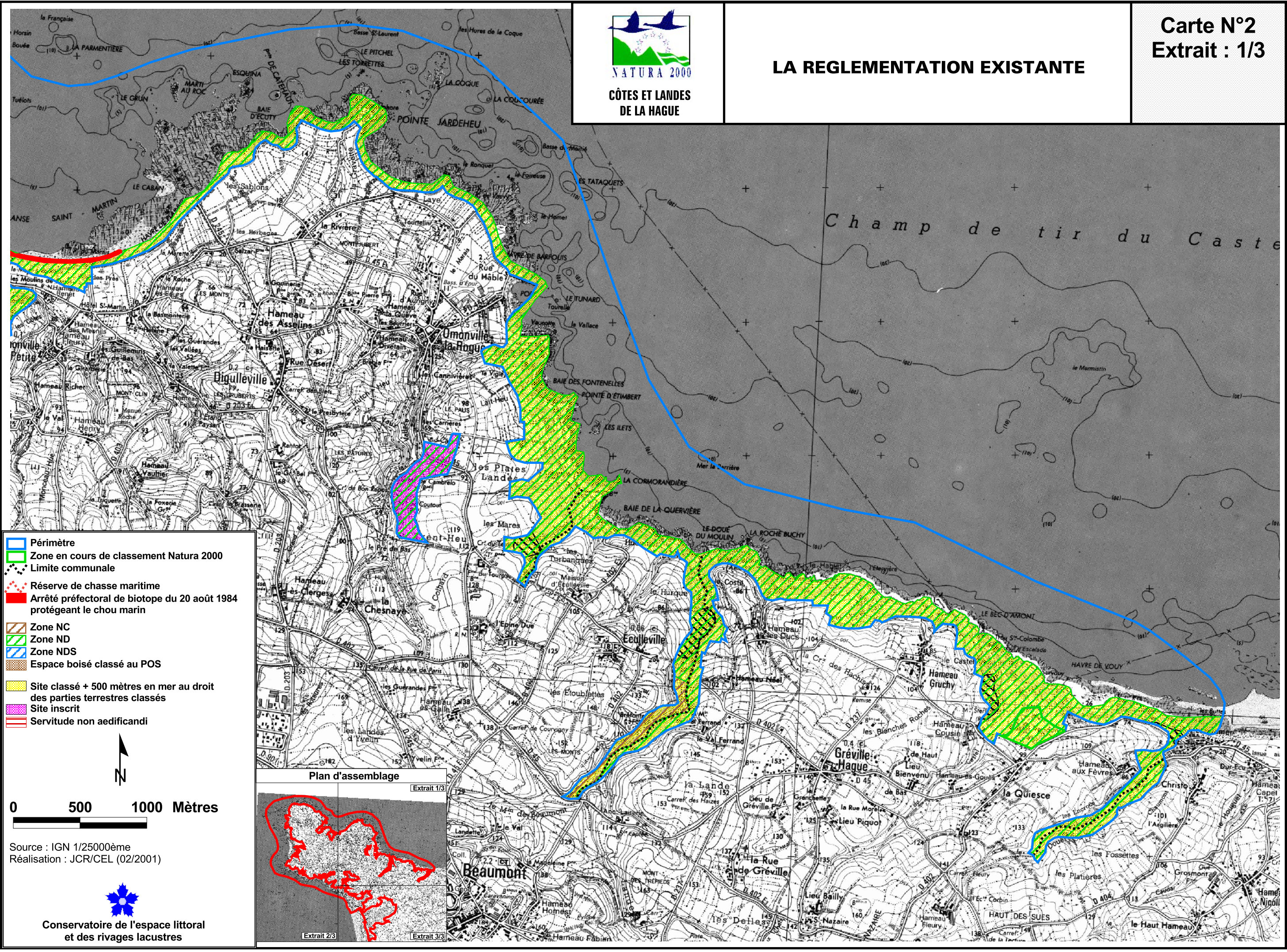
Echelle : 1/25000













Source : IGN 1/25000
Réalisation : JCR/CEL (02/2001)





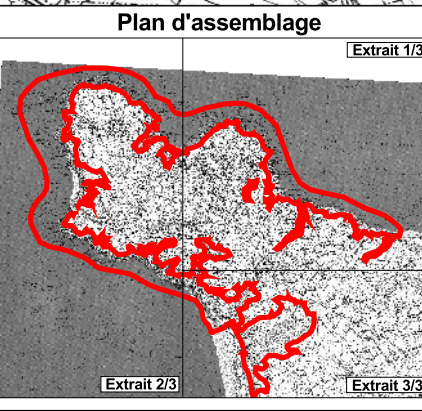
LA REGLEMENTATION EXISTANTE

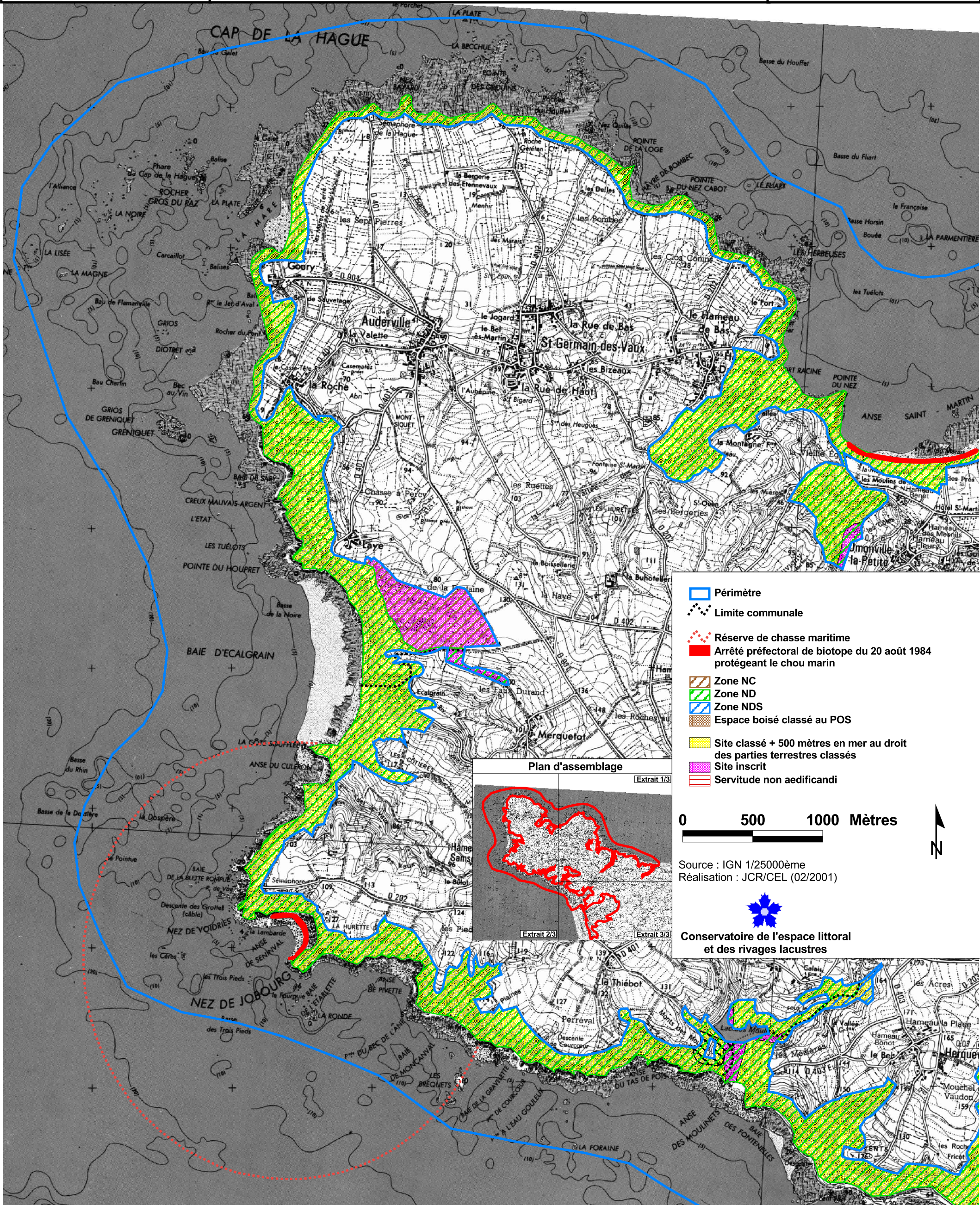













-  Périmètre
-  Zone en cours de classement Natura 2000
-  Limite communale
-  Réserve de chasse maritime
-  Arrêté préfectoral de biotope du 20 août 1984 protégeant le chou marin
-  Zone NC
-  Zone ND
-  Zone NDS
-  Espace boisé classé au POS
-  Site classé + 500 mètres en mer au droit des parties terrestres classés
-  Site inscrit
-  Servitude non aedificandi




Source : IGN 1/25000ème
Réalisation : JCR/CEL (02/2001)





-  Périmètre
-  Limite communale
-  Réserve de chasse maritime
-  Arrêté préfectoral de biotope du 20 août 1984 protégeant le chou marin
-  Zone NC
-  Zone ND
-  Zone NDS
-  Espace boisé classé au POS
-  Site classé + 500 mètres en mer au droit des parties terrestres classées
-  Site inscrit
-  Servitude non aedificandi

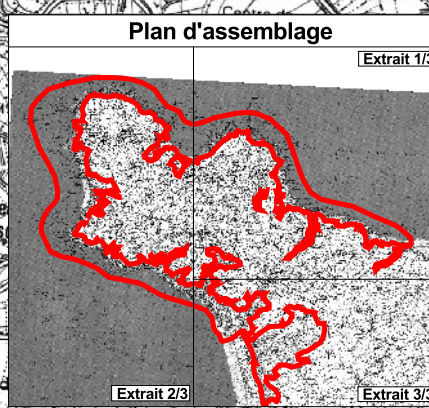
0 500 1000 Mètres



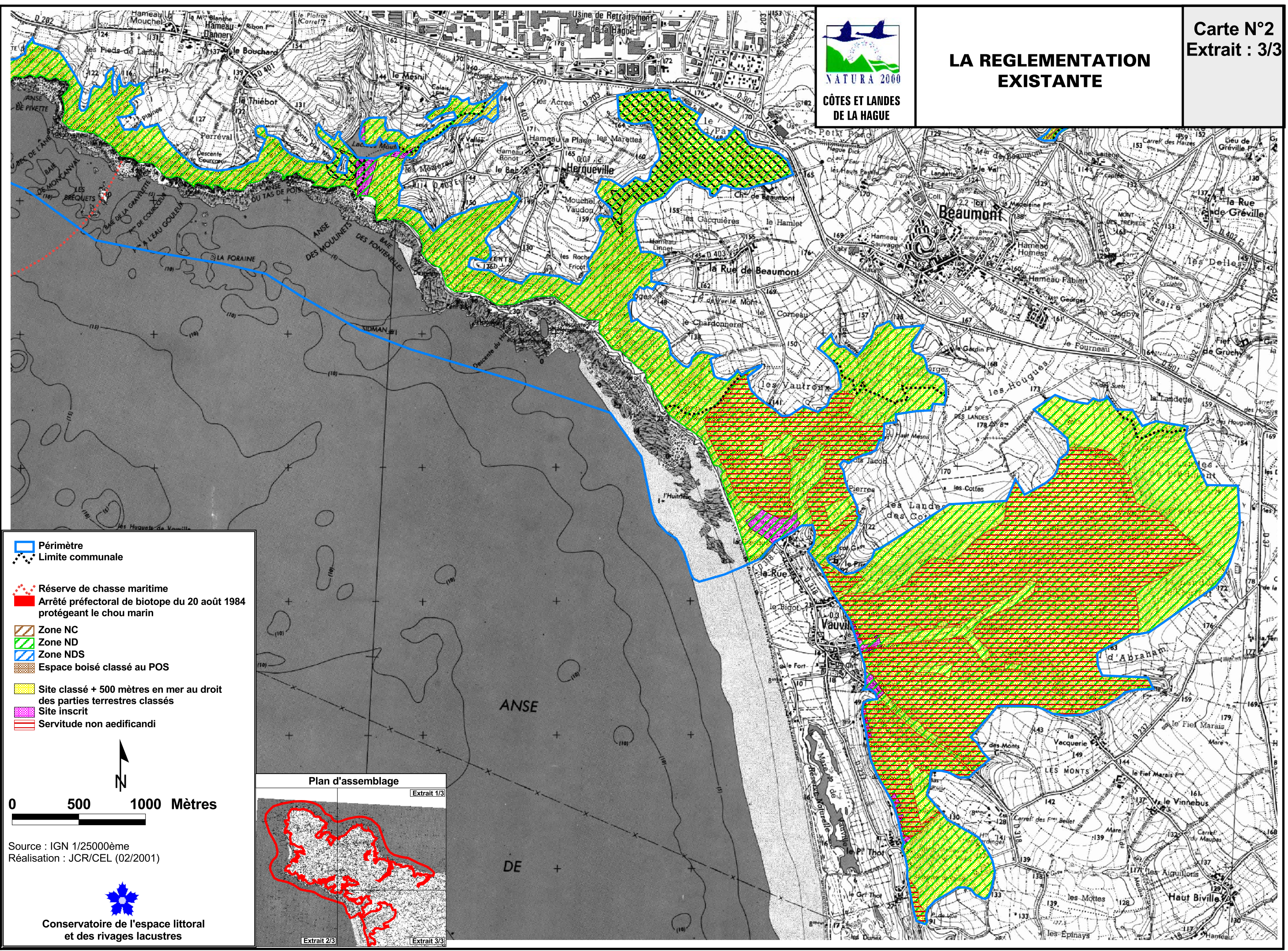
Source : IGN 1/25000ème
Réalisation : JCR/CEL (02/2001)



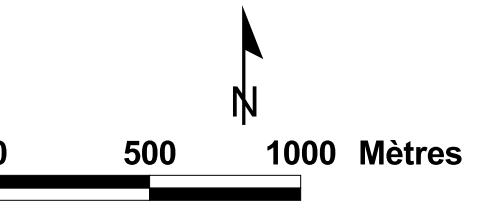
Conservatoire de l'espace littoral
et des rivages lacustres



LA REGLEMENTATION EXISTANTE



- Périmètre
- Limite communale
- Réserve de chasse maritime
- Arrêté préfectoral de biotope du 20 août 1984 protégeant le chou marin
- Zone NC
- Zone ND
- Zone NDS
- Espace boisé classé au POS
- Site classé + 500 mètres en mer au droit des parties terrestres classés
- Site inscrit
- Servitude non aedificandi



Source : IGN 1/25000ème
Réalisation : JCR/CEL (02/2001)

